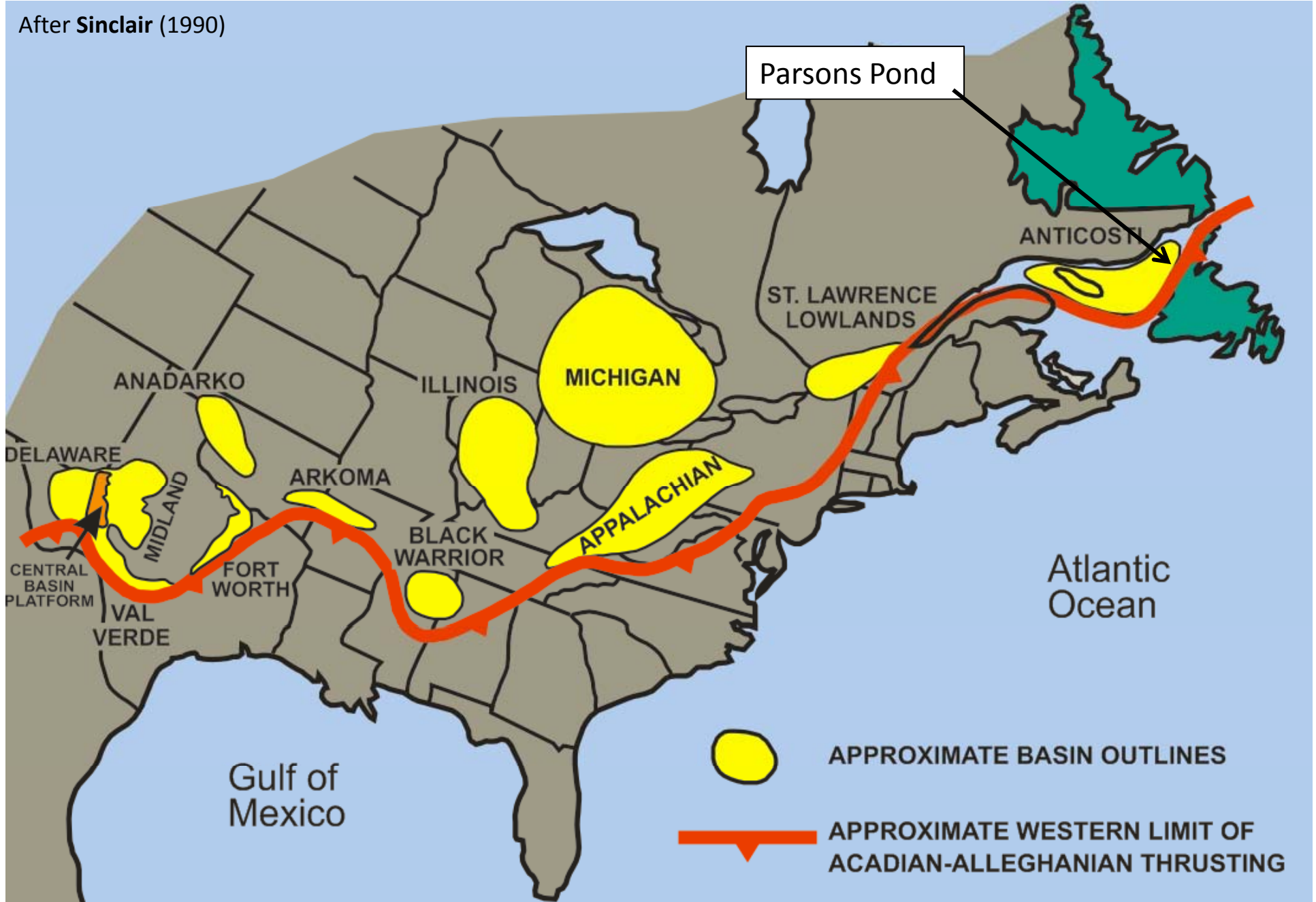
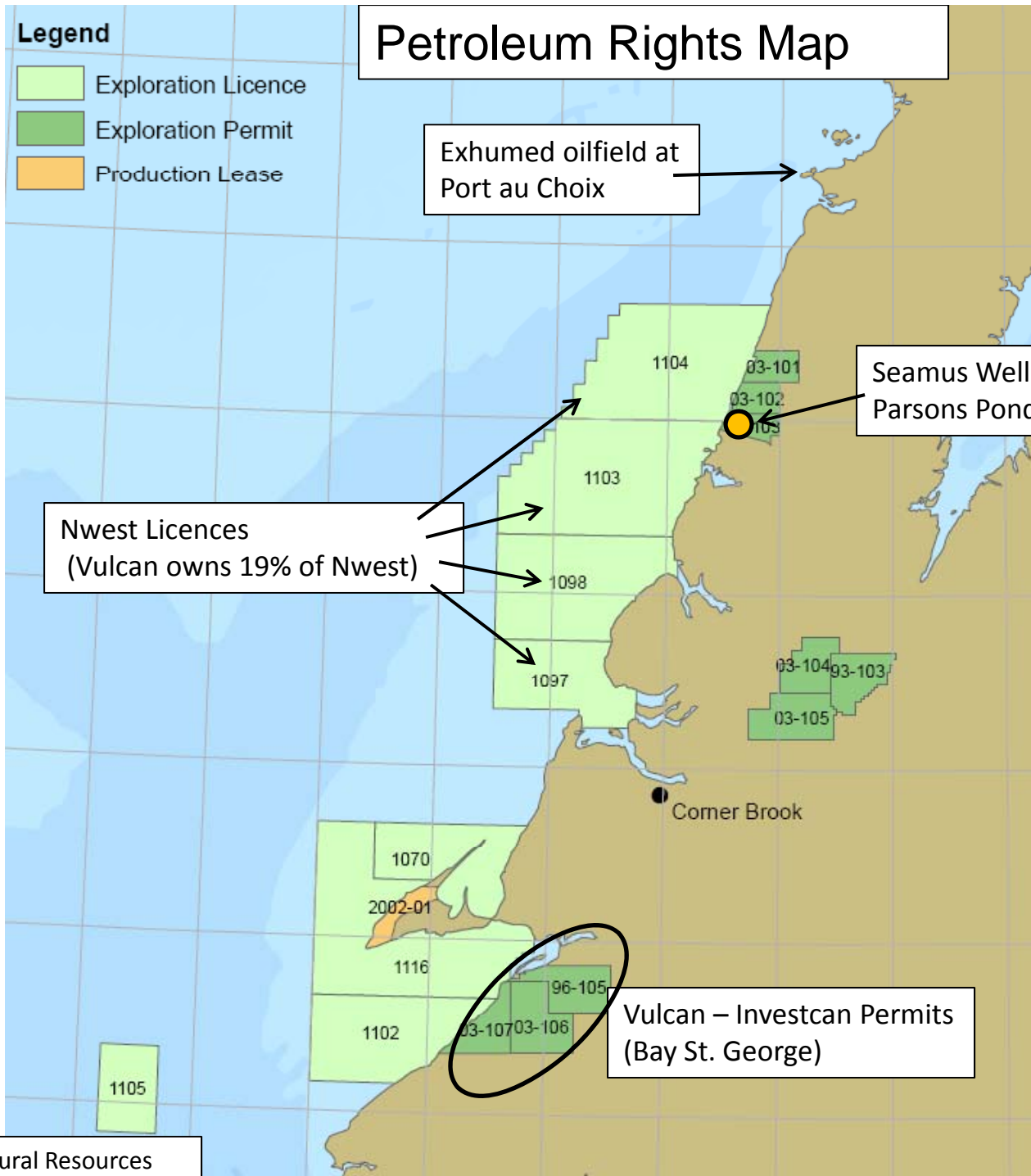


Map Showing Relationship of Parsons Pond Area to Appalachian Basins

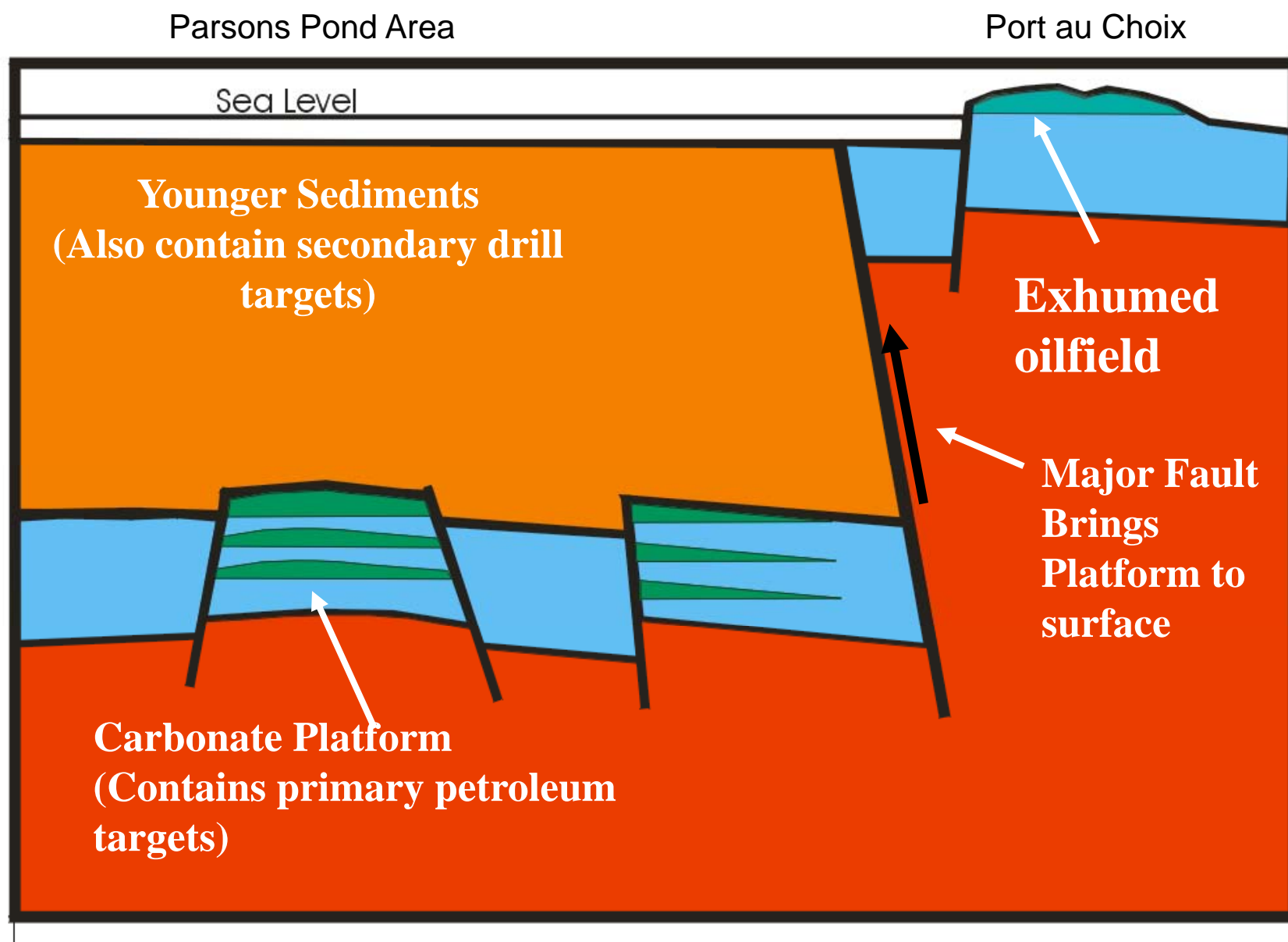
After Sinclair (1990)



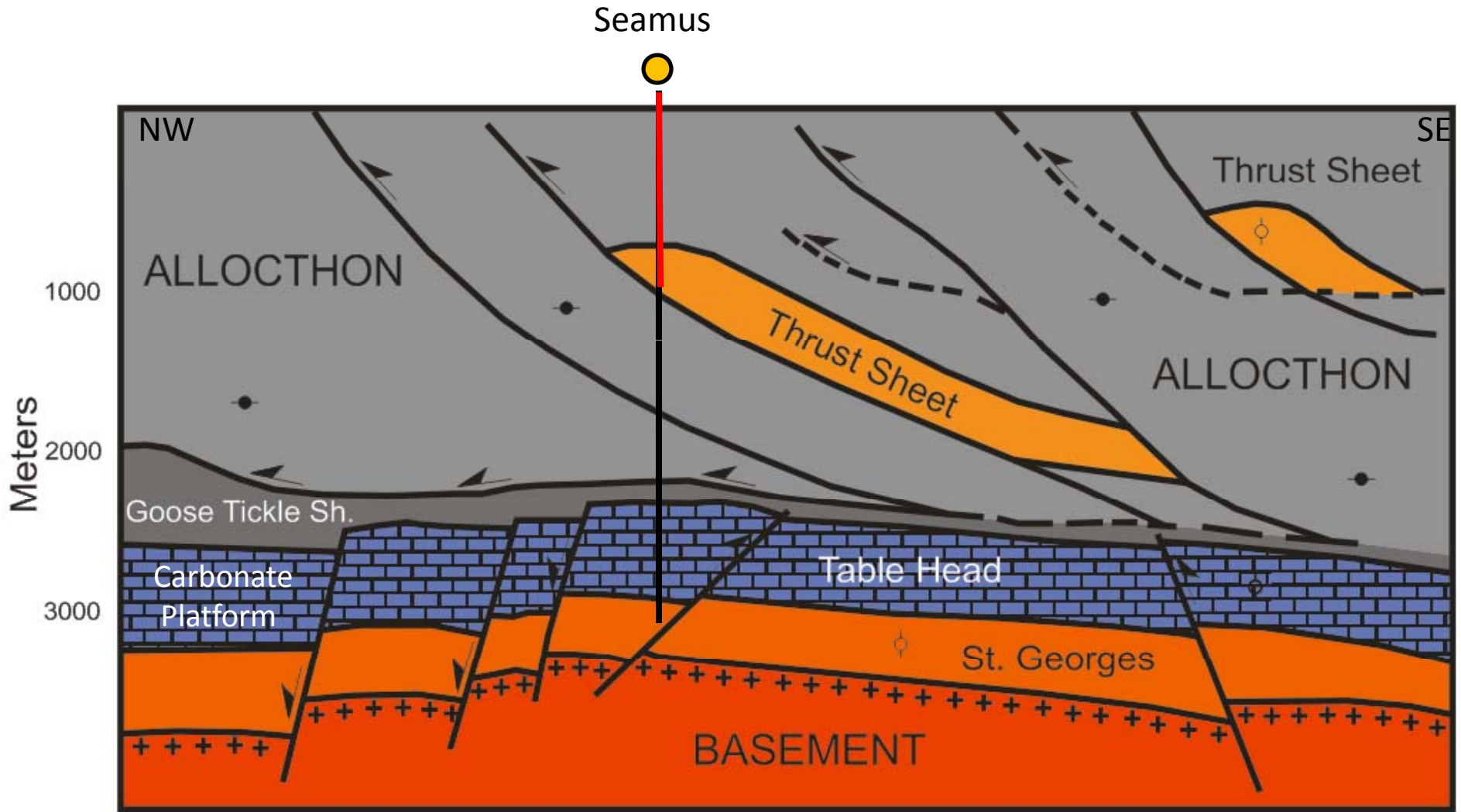


Land map from NL Dept. of Natural Resources

Schematic Cross Section Showing Relationship of Parsons Pond Play to Exhumed Oilfield



Schematic Geologic Cross Section Through Seamus Location – Parsons Pond



Parson's Pond
Based on Seismic Line 92-072

- ⊙ Possible Reservoir
- Proven Source Rock

2km

Section drilled in 2004 —

Modified after NL Dept. of Natural Resources